

The Kaipatiki Information Trail

A guide for new residents to Local Information and Services available in the Kaipatiki Local Board Area

(Beach Haven, Birkdale, Birkenhead,
Northcote and Glenfield)



Welcome

The Kaipatiki Information Trail booklet will assist you to find essential services within the Beach Haven, Birkdale, Birkenhead, Northcote and Glenfield suburbs on the North Shore of Auckland.

For sports and leisure activities, or if you want to volunteer in our community, please contact us and we will give you the appropriate contacts to assist you.

The Kaipatiki Community Facilities Trust, through a partnering agreement, is the lead organisation for the Kaipatiki Local Board providing various services and support to the communities within the Kaipatiki Local Board area.

Kaipatiki Community Facilities Trust

Phone 484 8854 or 027 483 4511

jill@kaipatikicomunityfaciliestrust.org.nz

www.kaipatikicomunityfaciliestrust.org.nz

Welcome	2
Important Contacts	3
Key Government Agencies	4
Community Facilities	4
Support Organisations	5
Education	6
Rubbish, Recycling & Reduce	8
Sustainable Neighbourhoods Map	10
Make a Difference	13
Kaipatiki Project	14
Volunteering in Kaipatiki	15
Kaipatiki Youth Navigator	16
Kaipatiki Youth Development Trust	17
Community Houses & Centres	18
Civil Defence	19
Public Transport	19
Kaipatiki Community Facilities Trust	20



Important Contacts



Local office: 09 484 8383

The Kaipāiki Local Board has a proud history of meeting the needs of its community, such as being the home of the first community house in the Auckland region and partnering with the Kaipāiki Community Facilities Trust to deliver community support to its residents.



www.aucklandcouncil.govt.nz

If you want to speak directly to someone at the Auckland Council to answer your question, provide feedback, help with a problem, or to direct you to the right place:

Phone: 09 301 0101

Email: enquiry@aucklandcouncil.govt.nz

Local Member of Parliament (MP)

Dan Bidois

15 Rawene Rd, Birkenhead | 09 419 8021



Kaipātiki Local Board Members

The Kaipātiki Local Board Members are your elected local authority representatives.

John Gillon (Chairperson)

021 286 2288

john.gillon@aucklandcouncil.govt.nz

Danielle Grant (Deputy Chairperson)

021 835 724

danielle.grant@aucklandcouncil.govt.nz

Paula Gillon

021 529 723

paula.gillon@aucklandcouncil.govt.nz

Ann Hartley

027 490 6909

ann.hartley@aucklandcouncil.govt.nz

Kay McIntyre

021 287 8844

kay.mcintyre@aucklandcouncil.govt.nz

Anne-Elise Smithson

021 729 577

anne-elise.smithson@aucklandcouncil.govt.nz

Adrian Tyler

021 535 841

adrian.tyler@aucklandcouncil.govt.nz

Lindsay Waugh

021 287 1155

lindsay.waugh@aucklandcouncil.govt.nz

The Kaipātiki Local Board Members are your local representatives responsible for providing governance at the local level within Auckland Council. They enable democratic decision making by, and on behalf of communities within the local board area. They are tasked with decision-making on local issues, activities and services, and provide input into regional strategies, policies, plans and decisions.

Contact them if you have concerns, suggestions, etc about local issues that affect our community as a whole, or you in particular.

Key Government Agencies



Work and Income NZ

www.workandincome.govt.nz

Birkenhead Office

87 Birkenhead Ave, Birkenhead 0800 559 009

Glenfield Office

1 Peach Road, Glenfield 0800 559 009



Birkenhead Fire Station

154 Mokoia Road, Birkenhead 09 419 4011

Always dial 111 for all emergency services



New Zealand Police

Always dial 111 for all emergency services

North Shore Policing Centre

52 Parkway Drive, Mairangi Bay 09 488 6200

Glenfield Police Station

365 Glenfield Road, Glenfield
09 443 8039 09 443 8041

Local Community Constables

These localised community constables are here to assist you in community policing and support in the community.

They can be contacted via the Glenfield Policing Centre on 09 443 8041.

Always dial 111 for all emergency services

Community Facilities

Birkenhead Library

Corner Rawene Road &, Hinemoa St
09 377 0209

Opening Hours:

Monday– Friday 9.00am – 5.30pm

Saturday– Sunday 10.00am – 4.30pm

Northcote Library

Norman King Square, Ernie Mays Street
09 377 0209

Opening Hours:

Monday– Friday 9.00am – 5.30pm

Saturday– Sunday 10.00am – 4.30pm

Glenfield Library

90 Bentley Ave , 09 377 0209

Opening Hours:

Monday– Friday 9.00am – 5.30pm

Saturday– Sunday 10.00am – 4.30pm

What will you find in our Libraries?

- Free WIFI, computers, printing, photocopying and scanning
- Books, magazines, newspapers, CDs, DVDs
- A large digital library with free e-books, e-audiobooks & e-magazines
- Programmes and events for children, adults and whānau
- Collections in Mandarin, Korean, and Te Reo Māori

Community Facilities

Leisure Centres & Swimming Pools

www.aucklandleisure.co.nz

Beach Haven Sports Centre

Cresta Ave, Beach Haven 09 444 6340

Birkenhead Leisure Centre & Pool

48 Mahara Ave, Birkenhead 09 444 6340

Osborne Memorial Swimming Pool

48 Mahara Ave, Birkenhead 09 444 6340

Mens Shed - North Shore

34 Elliott Ave, Glenfield (off James Street)

Monday & Wednesday 9am - 4pm,

Friday & Saturday 9am - 2pm

09 442 2145 | info@mensshednorthshore.org.nz

Outdoor Fitness Equipment

Greenslade Reserve

Greenslade Crescent, Northcote

Little Shoal Bay

Maritime Terrace, Northcote Point

Marlborough Park

Chartwell Ave, Glenfield

Normanton Reserve

Normanton Street, Glenfield

Shepherds Park

Beach Haven Road, Beach Haven

Sports & Leisure Clubs

For information on local sports and leisure clubs, please phone 484 8854.

Support Organisations

Community & Neighbourhood Support and Wellbeing

Contact the Kaipātiki Community Facilities Trust for local support information 09 484 8854.

Neighbourhood Support North Shore Inc.

www.neighbourhood.org.nz/

North Shore Neighbourhood Support Manager

admin@neighbourhood.org.nz

09 353 0427 / 022 675 9431



Safer Communities Together

Crimestoppers

If you have information about criminal activity, you can give that information anonymously to crimestoppers on 0800 555 111 or the online message forum www.crimestoppers-nz.org/

START BEATING BURGLARY RIGHT NOW... go to www.snap.org.nz

Citizens Advice Bureau (CAB)



- Where to go for local information -

The service provided free by the Citizens Advice Bureau is confidential and impartial and offers guidance and support.

Birkenhead

Birkenhead Library, Corner Hinemoa Street & Rawene Road

09 418 1232 | birkenhead@cab.org.nz

Northcote

Northcote Library Buildings, 5 Ernie Mays Street

09 480 2971 | northcote@cab.org.nz

Glenfield

Council/Library Building, 90 Bentley Avenue

09 444 9451 | glenfield@cab.org.nz

Education

Preschools / Kindergartens

Akoteu To'o Lelei Tongan Preschool

139 Queen Street, Northcote
09 480 0841
toolelei@xtra.co.nz

Bayview Kindergarten

70 Bayview Road, Glenfield
09 444 8440

Beach Haven Playcentre

6 Drome View Place,
Beach Haven 09 482 0794

Birkdale Kindergarten

179 Beach Haven Rd,
Beach Haven 09 483 8706
birkdale@aka.org.nz

Birkenhead Kindergarten

97A Mokoia Rd, Birkenhead
09 480 9671
Birkenhead@aka.org.nz

Chelsea Kindergarten

62 Balmain Rd, Birkenhead
Chatswood 09 480 7332
Chelsea@aka.org.nz

Glenfield Early Learning Centre

Cnr Glenfield Rd and Bentley
Ave, Glenfield 09 444 0818

Glenfield Kindergarten

Mayfield Rd, Glenfield
09 444 8473

Highbury Community Crèche

110 Hinemoa Street,
Birkenhead 09 480 5279
www.highburyhouse.org.nz

Kauri Kids ELC Beach Haven

130 Beach Haven Rd,
Beach Haven 09 483 9942

Kauri Kids ELC Birkdale

134 Birkdale Rd, Birkdale
09 483 9149

Kauri Park Kindergarten

11 McGlashen Place
Birkdale 09 483 7073

Marlborough Kindergarten

7A Agincourt St, Glenfield
09 480 9061
Marlborough@aka.org.nz

Nga Pihi Pihi o Te Purapura Pai Te Kohunga Reo

Birkenhead College
09 483 4291

Nga Pihi Pihi o Te Purapura Pai Te Kohanga Reo

C/- Onepoto Primary School,
Northcote
09 480 7469

Nga Tika Nga Pono Te Kohunga Reo

Kauri Glen Rd, Northcote
09 480 0713

Northbridge Central Kindergarten

36 College Rd, Northcote
09 418 1593
northcotecentral@aka.org.nz

Northcote Kindergarten

7 Nutsey Ave, Northcote
09 480 7039
northcote@aka.org.nz

Northcote Point Community Creche

152 Queen Street, Northcote
09 480 1280
northcote@xtra.co.nz

Onepoto Awhina Early Learning Centre

Pearn Crescent, Northcote
09 419 1692
onepoto1@xtra.co.nz

Onepoto Playcentre

51 Hillcrest Ave, Hillcrest
09 443 6359
onepoto@Playcentre.org.nz

Plunket Coffee Groups

Birkenhead, Northcote & Glenfield Contact:

birkenheadcsc@gmail.com
for more information on times
and locations.

Ta Fesilafai Aoga Amata

199 Beachhaven Road
Beach Haven 09 482 0310
tafesilafai1@xtra.co.nz

Totaravale Playcentre

37a Totaravale Drive,
Sunnynook 09 443 3505

Windy Ridge Playcentre

21A Totaravale Drive,
Totaravale 09 443 3505

Education

Primary Schools

Bayview Primary School

60 Bayview Rd, Glenfield
09 444 2222
office@bayview.school.nz

Beach Haven Primary

Tramway Rd, Beach Haven
09 483 7615
office@beachhaven.school.nz

Birkdale North Primary

213 Birkdale Rd, Birkdale
09 4838674
office@birkdalenorth.school.nz

Birkdale Primary School

Cnr of Birkdale and Salisbury Rd, Birkdale 09 483 7767

Birkenhead Primary

77 Mokoia Rd, Birkenhead
09 480 7365 office@birkenheadprimary.school.nz

Chelsea Primary School

Onetaunga Rd, Chatswood
09 418 0082
office@chelsea.school.nz

Glenfield Primary

101 Chivalry Rd, Glenfield
09 441 8730

Kauri Park School

16 McGlashen Place, Beach Haven 09 483 6539
office@kauripark.school.nz

Manuka Primary School

34 Manuka Rd, Glenfield
09 444 8775
office@manuka.school.nz

Marlborough Primary School

Wykeham Place, Glenfield
09 481 0365
office@marlboroughprimary.school.nz

Northcote Primary School

Cnr of Lake and Onewa Road, Northcote 09 480 7376
office@northcotechch.school.nz

Onepoto Primary School

Fraser Ave, Northcote
09 480 7469
office@onepoto.school.nz

St Mary's School

115 Onewa Rd, Northcote
09 418 4333
office@sms.school.nz

Sunnybrae Normal School

36 Sunnybrae Rd, Glenfield
09 443 5058
office@sunnybrae.school.nz

Target Road School

80 Target Road, Totara Vale, Glenfield 09 444 8493
admin@target.school.nz

Verran Primary School

136 Varran Rd, Birkenhead
09 483 7052

Wairau Valley Special School

102 Hillside Rd, Glenfield
09 444 5552

Willow Park Primary School

13-17 Compton Street, Glenfield 09 480 9236

Windy Ridge School

54 Seaview Rd, Glenfield
09 444 3105

Intermediate Schools

Birkdale Intermediate School

200 Birkdale Rd, Birkdale
09 483 9168
office@bis.school.nz

Glenfield Intermediate School

138 Chivalry Rd, Glenfield
09 444 6582
enquiries@glenfieldint.school.nz

Northcote Intermediate School

145-157 Lake Rd, Northcote
09 481 1400
admin@ni.school.nz

Colleges / High Schools

Birkenhead College

140 Birkdale Rd, Birkenhead
09 483 9039
office@birkenhead.school.nz

Glenfield College

Kaipatiki Road, Glenfield
09 444 9066
admin@gc.ac.nz

Northcote College

Kauri Glen Road, Northcote
09 481 0141
office@northcote.school.nz

Rubbish, Recycling & Reduce



The Average Aucklander sends about 160kg of rubbish to landfill every year. Of this, 65% per cent could have been avoided or put to better use. The tips in this guide will help you to reduce the amount of waste you send to landfill. It's much easier than you might have thought!

- A lot of rubbish can be reduced before it is even created - save on your bin tags
- Before shopping consider what is needed (eg straws or disposable products) ,
- can it be reused or repaired - There are now free repair cafes (<https://repaircafeaukland.com/>) locally and fixit.com to help.
- Buy at, and support local second hand shops.
- Need a shopping bag? Try a Boomerang Bag instead of getting a plastic bag – available from the Kaipatiki Community Facilities Trust office.
- See www.livelightly.nz for more great ideas to make a difference.



Recycling made easy

- You can recycle plastic, glass, metal and cardboard packaging containers from the kitchen, bathroom and laundry, as well as paper from home.
- Please don't put plastic bags in your Auckland Council recycling bin – they get caught in the sorting machines. You can now drop these to collection points at local participating retailers.
- For a full list of what can and can't go in your recycling collection use our recycling search at makethemostofwaste.co.nz

Please note:

- Rinse and squash all containers
- Leave the lids on all bottles and containers
- Containers should be no larger than 4 litres
- Include paper, cardboard and milk and juice cartons e.g. Tetra Pak® cartons in your recycling bin.

On your collection day

Putting your rubbish and recycling out

- Attach the pre-paid bin tag onto the left-hand bin handle of your rubbish bin so collectors can see it. (Recycling bins don't require a tag). Remember, your rubbish bin won't be collected without a tag!
- Leave your bin(s) as close as you can to the kerbside, clear of the footpath and clear of other bins and away from signs, lamp posts, trees and parked cars.
- Make sure your bins are not overfull and that the lids can be closed.
- Place your bins out the night before your usual collection day or by 7am on your collection day. Remember, your collection day is usually one day later after public holidays.
- For information about loss of bin, damage to bin or collection date changes, please visit aucklandcouncil.govt.nz or call 09 301 0101.
- Remember if you don't put your rubbish and recycling out right, it may not be collected.

Rubbish, Recycling & Reduce

✓ Yes please

These items go into recycling



plastic bottles



plastic bottles from the bathroom and laundry



plastic containers



clear plastic food containers



glass bottles and jars



aluminium cans and empty aerosols



milk and juice cartons e.g. Tetra Pak® cartons



steel and tin cans



advertising mail and envelopes



newspapers and magazines



paper and cardboard packaging



egg cartons



✗ No thanks

These items don't go into recycling



✗ plastic bags (full or empty)



✗ food and garden waste



✗ hazardous waste and chemicals



✗ polystyrene meat trays and packaging



✗ all types of batteries



✗ nappies



✗ clothing, shoes and textiles



✗ window glass, mirror glass and lightbulbs



✗ cookware, Pyrex and drinking glasses



✗ electronic and electrical items



✗ building waste



✗ medical waste



Sustainable Neighbourhoods Map

Reuse Shops

Beach Haven

1 St Vincent de Paul
211 Beach Haven Road
09 482 3017
www.svpd.org.nz

Glenfield

2 St Vincent de Paul
75 Ellice Road 09 443 5274

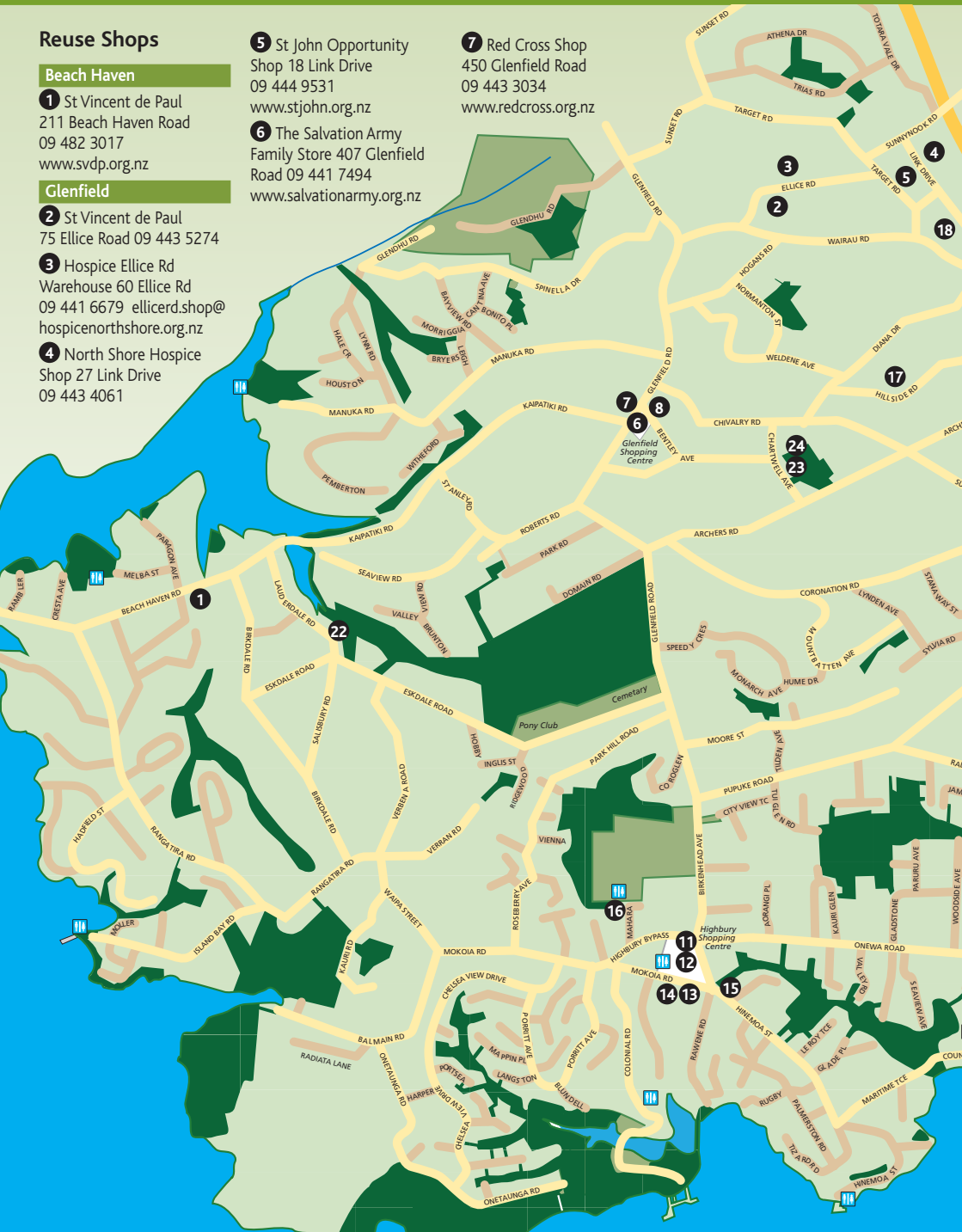
3 Hospice Ellice Rd
Warehouse 60 Ellice Rd
09 441 6679 hospicenorthshore.org.nz

4 North Shore Hospice
Shop 27 Link Drive
09 443 4061

5 St John Opportunity
Shop 18 Link Drive
09 444 9531
www.stjohn.org.nz

6 The Salvation Army
Family Store 407 Glenfield
Road 09 441 7494
www.salvationarmy.org.nz

7 Red Cross Shop
450 Glenfield Road
09 443 3034
www.redcross.org.nz



- 8** Sweet Charity Home
Store 96 Bentley Avenue
022 422 6885
www.sweetcharity.co.nz

Northcote

- 9** Savemart 30 College
Road 09 419 4537
savemart.co.nz
- 10** Northcote Baptist Op
Shop 103A Lake Road
09 480 7564

Birkenhead

- 11** The Salvation Army
Family Store 42 Birkenhead
Avenue 09 480 6718
www.salvationarmy.org.nz
- 12** North Shore Hospice
Shop 1 Hammond Place
09 480 2522
- 13** IHC Op Shop 50 Mokoia
Road 09 419 1957
- 14** SPCA 60 Mokoia Road
022 590 0114
www.rnzspca.org.nz
- 15** SPCA 231 Hinemoa
Street 09 418 3536
www.rnzspca.org.nz

North Shore Resource Centre

Useful stuff for schools, early childhood centres, community groups, craft and care groups.

- 16** 44 Mahara Avenue,
Birkenhead 021 165 3841
northshoreresourcecentre.org.nz

E-Waste / electronics, battery recycling, polystyrene, household appliances and secure document destruction

- 17** Abilities Group 91
Hillside Rd, Glenfield 09 444
0061 www.abilities.co.nz

Paint disposal

- 18** Renée Paintwise
8 croftfield Lane, Wairau Park
09 444 4387

Engine oil disposal

- 19** Repco North Shore
79 Wairau Road
09 444 4505

Metal Salvage Services

- 20** 16 Hillside Road
Wairau Valley 09 444 6368
www.metalsalvage.co.nz/
- 21** Auckland Scrap Metal
245 Archers Rd, Glenfield
09 444 9700
0800 44 88 99
www.aucklandscrapmetal.co.nz

Curtain Recycling

- 22** Drop off point – Kaipatiki
project, 17 Lauderdale Road,
Birkdale.

We help turn old curtains into new ones for those in need. VisionWest runs a curtain-bank. They take old curtains, they clean them, they adjust them where needed and provide them to low-income families to help keep their houses warm.

Re-purposing

- 23** Boomerang Bags
Kaipatiki North Shore
15 Chartwell Ave, Glenfield

Mobilizes communities to make re-useable 'Boomerang Bags' using recycled materials, to be used instead of plastic bags.

sustainability@kaipatikicommunityfacilitiestrust.org.nz

Sustainable Kaipatiki Lead Advocate

- 24** Kaipatiki Community
Facilities Trust Hub
15 Chartwell Ave, Glenfield
The Kaipatiki Community Facilities Trust provides community development and a variety of programmes, events and projects.

Off the Map Helpful Sites

[aucklandcouncil.govt.nz/
rubbish-recycling/
Pages/community-
recycling-centres.aspx](http://aucklandcouncil.govt.nz/rubbish-recycling/Pages/community-recycling-centres.aspx)



Community Recycling Centre
Devonport, 27 Lake Road,
Devonport 09 444 1999

[globalactionplanoceania.
com/devonport-community-
recycling-centre](http://globalactionplanoceania.com/devonport-community-recycling-centre)

Refill Eco Store
Products



Useful websites

[aucklandcouncil.
govt.nz](http://aucklandcouncil.govt.nz)



[makethemostofwaste.
co.nz](http://makethemostofwaste.co.nz)



trademe.co.nz



Composting

sharewaste.org.nz/
*Join the collective.
Share your waste*



[compostcollective.
org.nz/](http://compostcollective.org.nz/)

*Learn what
composting system is best
for you.*



Soft plastic recycling

[recycling.kivi.nz/
solutions/soft-plastics/](http://recycling.kivi.nz/solutions/soft-plastics/)



Rubbish, Recycling & Reduce

Food and garden waste

Reduce your food waste, save money

Using all the food you buy and composting food scraps, tea and coffee grounds are two easy ways to reduce food waste sent to landfill.

The Love Food Hate Waste movement

supports Aucklanders to minimise their food waste at home. Visit

lovefoodhatewaste.co.nz for tips on meal planning and safe storage.



Get composting

Composting is a great way to keep the goodness in your garden. It's easier and cleaner than you might have thought. Auckland Council provides support to get you composting, through the council funded compost collective. To find out more about free courses and local advice visit compostcollective.org.nz or call 09 482 1672.

Types of composting

Compost bin: For food scraps, garden pruning, grass and dead leaves.

Worm farm: Use to dispose of food scraps and small amounts of paper.

Bokashi fermentation bucket: For food scraps, including meat and cooked leftovers.



Garden waste

Garden waste is grass clippings, branches, weeds, plants and wood.

What can I do with my garden waste?

- Use your garden waste to build healthy compost.
- Mulch your lawn clippings and garden waste.
- Take your garden waste to a nearby transfer station or green waste drop-off point.
- Sign up with a green waste collection company.



Inorganic collections

Donate it. Sell it. Book it in

Auckland Council has changed how they collect inorganic items, to make things better for everyone. They now collect from inside your property boundary once a year. This means less mess on the street, so your neighbourhood is tidier and safer. Reusable items are made available to local community groups who can use them as much as possible.

There are lots of things you can do to keep inorganics out of landfill. Consider donating or selling your items before booking an inorganic collection. To book in your inorganic collection go to makethemostofwaste.co.nz/inorganic-collection

Big items don't belong in rubbish

Please don't put large household items in your recycling or rubbish collection. There are other ways to dispose of these things responsibly. You can:

- Recycle, repair, donate, gift or exchange items
- Drop them off at a transfer station during opening hours (charges may apply)
- Contact the manufacturer to see if they will take the product back for recycling.



Hazardous waste

Household hazardous waste is unwanted household products and chemicals that can potentially harm people's health or pollute the environment. Hazardous waste often has labels such as 'warning', 'caution', 'danger', 'poison' or 'do not dispose of with household rubbish'.

The best way to manage hazardous waste is to eliminate or reduce its use whenever possible.

See map on previous pages

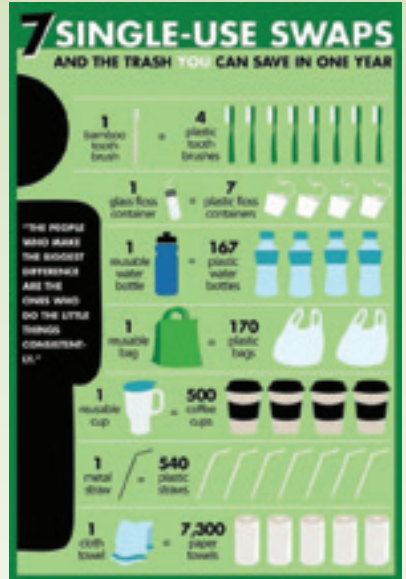
Make a Difference

Moving around? Can you bike or walk or car pool? There are some great walk and cycle ways - try these out to get out and about in your local area. Save on travel hassles and check out AT's Journey Planner at govt.nz/bus-train-ferry/journey-planner/ for ideas to get about on bus, bike or walkways.

Plus think of other ways you can reduce, recycle, etc



- Find out more about ways to make a difference - reduce some of your costs and live well in your home at www.livelightlly.nz/
- Shop and eat locally
- Walk or bike the greenways, car pool to make friends or stay home and skype into meetings
- Green up your backyard and beyond
- Set up a 4 minute Spotify play list for taking a shorter shower challenge to save on your hot water use
- Share, Repair or swap items before buying new



Home Health Check

Find out how much energy you are using and how to reduce it by borrowing a HEAT (Home Energy Audit Toolkit) kit from the local library for free.

An average New Zealand house spends around \$2500 per year on energy and heating. By taking these low cost actions **you could save up to \$1000 a year.**

Stop drafts - drafts make your home uncomfortable and harder to keep warm.

- Seal windows, doors and use draught excluders
- Hang full-length, lined curtains in bedrooms and living areas

Reduce dampness - damp air is unhealthy, causes mould and costs more to heat.

- Dry off windows and remove mould



- Dry clothes outside
- Put lids on cooking pots
- Use extractor fans when bathing/showering and cooking
- Open curtains sunny days to let the sun in
- Open doors and windows for 30 minutes daily

Smart energy use - use heating and appliances the right way.

- Switch to a low flow shower head or flow restrictor
- Take a five minute shower
- Swap portable gas heaters for safe effective heating
- Use timers and thermostats
- Dry clothes outside
- Wrap your hot water cylinder
- Wash clothes in cold water
- Switch to LED light bulbs
- Turn off appliances at the wall when not in use

Kaipatiki Project

Kaipatiki Project is the North Shore enviro hub. Call us for advice on anything environment or sustainability related.

Our vision - Connected, resourceful, healthy families, neighbourhoods and communities regenerating our planet's environmental systems.

Our mission - To unleash the creativity of the community to identify and solve local environmental challenges.

We offer the following at our Enviro Hub and in your local community:

Workshops - Our courses are practical, innovative and inspirational. We offer a diverse range of topics to help you with environmental challenges. Some are free, some have a small fee. Bookings required.

Volunteering - The heart of Kaipatiki Project! Volunteering with us is fun and fulfilling, with a range of ways to get involved. Support to learn practical skills, and make a real difference to our environment – Monday and Thursday mornings 9am-12, with coffee, tea, biscuits and great company!

Bushcare - In the Winter months, join in weeding, pest trapping and planting in our local neighbourhoods: learn something, contribute something!

EcoFest North 2019 - March 9- April 14– Join this fun, month-long festival of eco-friendly events. All welcome to host and participate at. Register your interest now at office@kaipatiki.org.nz (Include your name, organisation, contact person and details and area of interest.)



Curtain Recycling and Drop-off - We take old curtains, so they can be cleaned and adjusted where needed, to help keep families across Auckland warm.

Possum Trap Library - If you have a possum in your backyard then come in to the Centre and hire a possum trap. Cost \$10 – with a refundable \$50 bond.

Plants for Sale - If you are in the market to buy native plants to restore the bush or your backyard, give us a call. Requests for advice are welcome, and we can grow to order with 12 months notice. Our plants are in high demand so it is worth checking availability. We grow the usual range of local native species, with a mix of specialist revegetation pioneering and canopy species, groundcovers, understorey and wetland plants. We also carry some species suitable for the home garden or schools. We only grow native plants from seeds sourced locally (Tamaki Ecological District).

Contact Us:

www.kaipatiki.org.nz 09 48201172
www.facebook.com/kaipatikiproject
 17 Lauderdale Rd, Birkdale
 Open 9am - 5pm weekdays



Volunteering in Kaipatiki

Kaipatiki Bush Groups

Another way to get healthy exercise and support the environment is volunteering in a bush reserve. Throughout the Kaipatiki region, there have been dedicated "Bush Groups" set up for individual reserves and bush areas. Members of these groups are usually locals whose properties border the area, and they coordinate to look after that particular piece of bush.

Kaipatiki Local Parks and Reserves are your backyard! They are great places to play, walk, run, relax, or just get outside but like anything, they need people like you to help keep them maintained. When you "Get Involved as a park volunteer" in your area, you will join other like minded people who share a love of public lands and giving back.



Here in Kaipatiki we have the Kaipatiki Restoration Network, and it is through this network of keen volunteers that you can find the support and guidance you may need in either setting up your own neighbourhood "Kaipatiki Bush Group", or to join an existing one. Contact them on: kaipatikirestorationnetwork@gmail.com

Pest Free Kaipatiki

Do you enjoy our native bush? Would you like Kaipatiki to be a place where birds and other native wildlife flourish?

Then don't let rats, possums and invasive weeds destroy Kaipatiki's natural heritage! Join with your local community to help exterminate the pests!

Rats and other pest animals eat the eggs and kill baby birds. Invasive pest plants can suppress the regeneration of native plants in bush reserves and other ecological areas. Surveys carried out across Kaipatiki have identified that at least two thirds of significant natural areas are impacted to a moderate to high degree by weeds. Add to this development pressures associated with Auckland's growing population resulting in the disruption of natural processes and the fragmentation of habitats. All of this is impacting on the survival of native birds, other wildlife and plant species.

Pest Free Kaipatiki has been setup by the various Kaipatiki Bush Groups working with the Kaipatiki Local Board and other local organisations. Their stated aim is: *"Pest Free Kaipatiki - a place where birds and other native wildlife flourish, people value and care for their own backyard and local open spaces, and everyone works together to support our natural heritage and develop wildlink connections"*



Join us on pestfreekaipatiki.org.nz

Like us on FaceBook - facebook.com/groups/PestFreeKaipatiki/

Kaipatiki Youth Navigator

The KCFT employs a Youth Navigator to act as a mentor for our youth, and as an intermediary between local and central government agencies for those young people. Initiatives undertaken by the Youth Navigator include:

Jobs4Youth

The key principle of Jobs4Youth is that it connects schools and young people with opportunities in employment, education and training. It's about providing local leadership and solutions to local issues, as well as building trusting relationships with employers and encouraging the business community to take a leading role for the future of their workforce.

The project works collaboratively with schools, youth programmes, employers and central government to connect key parties to create opportunities for young people. Support is often required to get them on track in a dynamic, advancing economy to ensure their success AND to build a strong workforce.



Kaipatiki Local Youth Board

Provides opportunities for young people in Kaipatiki to get involved in the community, and have the voice of youth in local decision making processes. It also means being part of the local consultation process with the Kaipatiki Local Board and other local and central government agencies.

Most importantly, the Kaipatiki Local Youth Board allows our youth to engage with others their same age at a decision-making level, and to engage with elected officials and politicians to provide events, or projects for youth lead by youth. An obvious example is the new Kaipatiki Youth Development Trust Youth Space – built in Marlborough Park, Glenfield specifically for youth oriented events and programmes which benefited from intensive input from our youth.

Children's and Student Panels

These panels, started three years ago, have provided an opportunity for young people to have a voice in specific areas each school term throughout the year, working collaboratively with agencies and/or our Local Board. Schools involved include Birkenhead, Glenfield and Northcote High Schools, Birkdale, Glenfield and Northcote Intermediate Schools and in 2017 we have been trialling panels in Birkdale and Windy Ridge Primary Schools.

A snapshot of the issues covered include: Pest Free Kaipatiki, Youth Health, Transport, Safety in the Community, Watersafe, Library Hours, Connected Kaipatiki.



Kaipatiki Youth Development Trust

Marlborough Park, Chartwell Ave, Glenfield



The KYDT is as a community-based social service provider working alongside 'at-risk' young people and their whanau.

The purpose of KYDT programmes is to decrease youth related offending within our communities, and to increase positive youth involvement in community based activities and events. To continue to be a recognised provider of programmes and training catered towards "at risk" youth and their whanau. To strengthen and establish partnerships with key community and statutory stakeholders by working collaboratively together and developing Intervention strategies that work for whanau and communities. The KYDT staff are committed to offering a culturally competent practice and culturally safe interventions for young people.

The success of KYDT is achieved through the provision of our core services:

- Kanohi ki te Kanohi: individualized activity based mentoring and social support work
- Early Intervention Programmes (EIP) in local Primary, Intermediate and Secondary Schools
- After school activity based programmes
- Collaboration and networking
- Counselling services

The organisation originally worked in the Birkdale and Beach Haven communities, but has extended their operations to include Glenfield and other suburbs covered by the Kaipatiki Local Board area of Auckland (namely Birkenhead, Northcote, Glenfield).



KYDT Mission

KYDT believes that all young people are to be nurtured in a safe and healthy environment, and that they are valued and empowered to achieve their full potential in education and employment, and to be citizens fully participating in their communities, making their communities safer. If we are to achieve the desired goal of success for all children and young people then we must hold high expectations for all, especially for those most vulnerable in our communities. We must view these young people as having strengths and not "deficits," and adopt programs and practices that help all young people to achieve their true potential.

All children and young people are special and significant.

Community Houses & Centres

Bayview Community Centre

72 Bayview Rd, Glenfield | 09 443 0231

Before and after school care, holiday programmes, early learning centre and various community classes. Early Learning Centre (ELC).

Beach Haven Community House

130 Beach Haven Rd,
Beach Haven | 09 483 9942

Offers a coffee group (family support), early bird walking group, support for family issues and health. Also run a wide variety of classes and numerous support groups, and social groups. Early Learning Centre (ELC).

Birkdale Community House & Birkdale Hall

134 Birkdale Rd, Birkdale | 09 483 9148

Classes in crafts, family skills, cooking, art, computers, patch-work, or anything that you want. Groups formal and informal or just drop in for a chat and a cuppa. Houses available to non-profit groups for meetings and seminars etc. Early Learning Centre (ELC).

Cedar Centre

(Anglican Church, Tramway Road)

56a Tramway Rd, Beach Haven | 09 483 6989

Glenfield Community Centre

Cnr Bentley Ave and Glenfield Rd, Glenfield
09 444 5023

Early Learning Centre, school holiday programmes, and various other programmes for the community.

Highbury Community House and Early Learning Centre

110 Hinemoa Street, Birkenhead | 09 480 5279

Offering various classes or courses that meet specific community needs. The crèche offers excellent morning and afternoon sessions.

Onepoto Awhina

(Northcote Community House & Early Education Childhood Centre

Pearn Crescent, Northcote 09 419 1692

Onepoto Awhina offers support to local Northcote residents. The childcare centre operates daily.

Norman King Community HUB

65 Pearn Cres., Northcote Town Centre
09 441 8989 (Hours: 9:00am - 4:00pm)

Hearts and Minds Inc is a primary mental health provider / community development organisation with a focus on mental wellbeing, community wellbeing and diversity. Underpinning our core focus is the desire to support better outcomes for all.

The Fono North Shore, where caring is our culture, offering a selection of community services for families. Our friendly, qualified staff come from a wide variety of backgrounds and our services are for everyone.

Northcote Citizens Centre

(The KCFT Hub) Cnr Ernie Mays Street and College Road | 09 480 5834

A community centre with a hall and facilities for hire. Contact us for bookings and enquiries.

Rawene Centre

33-35 Rawene Rd, Birkenhead | 09 481 3030

ESOL classes, Kiwi culture and adaptation, assisting in individual and community wellbeing Seminar rooms with full kitchen facilities.

Civil Defence



These sites can help you prepare for an emergency:

www.civildefence.govt.nz

www.happens.nz

www.getthru.govt.nz

www.aucklandcivildefence.org.nz

For more information phone:

09 301 0101

Stay informed

Emergencies can happen anywhere, any time, and without warning. Make sure you and the people you care about are ready to get through by knowing the different ways to stay informed.

Radio

If the power goes out, a solar or battery powered radio (or your car radio) can help you keep up to date with the latest news. In an emergency, tune to these stations: Radio New Zealand, The Hits, NewstalkZB, MoreFM, Radio Live.

Online

For local updates, check the Auckland Emergency Management website:

www.aucklandcivildefence.org.nz and follow us on social media channels.

Know your neighbours

There's strength in numbers. In an emergency, you can work with your neighbours to get through. Neighbourhood Support Groups bring local people together to create safe, supportive and connected communities.

Join Neighbourhood Support at neighbourhoodsupport.co.nz or call 0800 463 444.



Emergency Alert

There are three ways of subscribing to emergency updates at Auckland Civil Defence website: <https://bit.ly/2PTzK9M>



1. Red Cross Hazards App

2. SMS - register online.

You will receive SMS messages from Auckland Emergency Management when there is important information and actions to take.*

3. Email - register online

You will receive emails from Auckland Emergency Management when there is information you may need to know.

If life or property is threatened always dial 111 for Police, Fire or Ambulance.

* You will only receive an SMS during an important event when actions need to be taken.

Public Transport

PDFs of all bus & ferry timetables can be found on the AT website (for download or printing): at.govt.nz

You can also order a hard copy via email at: timetables@at.govt.nz

Printed hard copies can also be obtained at the Customer Service Offices at the Busway Stations, as well as from:

Birkenhead Transport 09 483 9119

Fullers Ferries Services 09 367 9111

North Star Bus Services 09 444 4408

Ritchies Transport 09 415 9138

For more information: www.maxx.co.nz/

09 366 6400 0800 1030 80 Or Text 3666

Auckland Transport

An Auckland Council Organisation

Plus useful help at these websites:



at.govt.nz/bus-train-ferry/journey-planner



at.govt.nz/bus-train-ferry/at-hop-card

Kaipatiki Community Facilities Trust

Kaipatiki Community Facilities Trust (KCFT) has a partnering agreement with the Kaipatiki Local Board to provide community development, placemaking, community resources, community events and projects in Kaipatiki that meet local residents needs or increase neighbourhood sustainability.

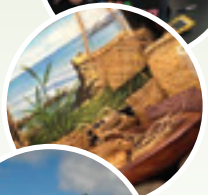
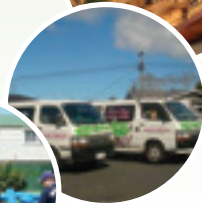
The Trust continually, provide support around Tikanga Māori, and all that increases Te Ao Māori, shared outcomes and benefits through collaboration with mataawaka/mana whenua driven kaupapa.

The Trust will ensure that local Māori are involved within the leadership; of appropriate consultation/ hui and projects.

We use the "Five Wellbeings" approach in our community development because these increase opportunities for participation, enable the transfer of skills between people, develop self reliance, build organisational capacity and networks of community groups, ensures local ownership of projects and decisions, utilises local resources to solve local problems and, in the end, effectively increases the amount of social capital available within a community.

Key areas of engagement include:

- Strategic Partnerships and Collaboration
- Community Development and Wellbeing for all sectors
- Projects, events and activations that meet community needs
- Summertime and Wintertime Programme in Parks and Reserves
- Kaiaptiki Community Networks
- Communication - Placemaking and Placeshaping
- Kaipatiki Youth Navigation - youth mentor and employment pathways
- Sustainable Neighbourhoods
- Arts and Culture Projects
- Media Resources



15 Chartwell Ave, Glenfield, Auckland

Phone 484 8854

Email: jill@kaipatikicomunityfacilitiestrust.org.nz

Web: kaipatikicomunityfacilitiestrust.org.nz

Facebook: <https://www.facebook.com/BNCFT/>

